

**CHRIST CHURCH CHURCH OF ENGLAND  
PRIMARY SCHOOL**

Baker Street  
Weston-super-Mare  
North Somerset  
BS23 3AF

Headteacher: Mr Clive Wilson

Tel: (01934) 620738 Fax: (01934) 622398

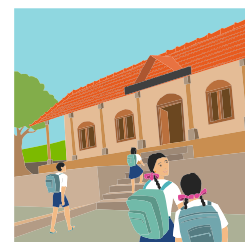
E-mail: [christchurch.pri@n-somerset.gov.uk](mailto:christchurch.pri@n-somerset.gov.uk)  
[www.christchurchprimaryschool.org](http://www.christchurchprimaryschool.org)

3 February 2012

Dear Parents

### SCHOOL TERM & HOLIDAY DATES

With this letter is a list of the school term and holiday dates for the next academic year. At the moment I am unsure when the inset days will be but will let you know these as soon as I am able. Can I please remind you that we do not encourage children to take holidays in term time. Just to remind you that the term/holiday dates for the remainder of this year are as follows:



Friday 10 February	-	3.20 p.m. School closes for end of Term 3 break
Monday 20 February	-	8.45 a.m. School reopens for Term 4
Thursday, 29 March	-	3.20 p.m. School closes for Easter break
Friday 30 March	-	INSET TRAINING DAY FOR STAFF
Monday 16 April	-	8.45 a.m. School reopens for Term 5
Monday 7 May	-	MAY DAY BANK HOLIDAY
Friday 1 June	-	3.20 p.m. School closes for end of Term 5 break
Monday 11 June	-	8.45 a.m. School reopens for Term 6
Friday 29 June	-	INSET TRAINING DAY FOR STAFF
Thursday 19 July	-	School closes for summer break.

### SCHOOL MEALS

Also with this letter is a copy of the new Spring/Summer School Meal Menu which begins immediately after the end of term 3 break. Edwards & Ward have again won the contract to provide school meals and the cost of a school meal is likely to stay at £2 for the foreseeable future. Don't forget that if you are entitled to income support, job seekers allowance, employment support allowance, child tax credit (but not working tax credit) then you may be entitled to free school meals. Please pop into the office to find out more and pick up an application form.

### SWIMMING

We have been advised by Hutton Moor that children are no longer permitted to swim if they are wearing any form of jewellery including stud earrings. In the past we have covered earrings with plasters but this is not always successful and so Hutton Moor are insisting that all jewellery is removed. Can I please ask that either your child does not wear earrings to school on their swimming day or you ensure your child is able to remove their earrings themselves. Thank you.



## CLOTHING

I expect you will have noticed the huge pile of lost property that was in the playground this morning. **All these clothes belong to someone in school and unfortunately none of them are named!** Can I please ask that you label **ALL** your child's clothing. The majority of jumpers, trousers, skirts etc have labels for you to write their name on. We also are able to order name labels which can either be sewn into clothes, ironed on or secured using a 'taggit'. Prices start from £3.30 and forms are available from the school office.



## PRIORY OPEN EVENING

Parents in Year 5 may be interested to know that Priory will be holding their open evening on **Thursday, 5 July 2012**. In the past their open evenings have been held in October but they are changing in line with comments received from prospective parents who would prefer to see the school in the daylight! I will let you know when any other schools release their dates.

## MEASURING OF RECEPTION & YEAR 6

For your information, the School Nursing team will be coming into school on Monday, 5 March to carry out the height and weight measurement of both the Reception Class and Year 6. Letters have been sent out previously direct from the School Nursing team advising this would be done.

## PARENTS' EVENINGS

The next Parents' Evenings will take place on Tuesday, 13 March from 4 p.m. - 7 p.m. and Thursday, 15 March from 3.00 p.m. - 5.00 p.m. A letter giving further information will be sent out early next term.

## EXTREME WEATHER CONDITIONS

With talk of snow please remember that in the event of the school having to close we will put the information on the school website, inform North Somerset Council and put signs outside. The Council will contact the local radio stations. It would be appreciated if you could not ring the school so that the line is free for emergency calls. Thank you.



Could I also ask that children come to school with hat, scarves and gloves in this cold weather. To give the children the chance of some fresh air and exercise we go outside at breaks and lunchtime, unless it is raining, and the children need to be dressed warmly. Don't forget to label them though!

Yours faithfully

C Wilson  
Headteacher





**SCHOOL TERM AND HOLIDAY DATES  
2012/2013 ACADEMIC YEAR**

**TERM 1**

**Starts: Monday 3 September 2012**

**Ends: Friday 26 October 2012**

**TERM 2**

**Starts: Monday 5 November 2012**

**Ends: Friday 21 December 2012**

**TERM 3**

**Starts: Monday 7 January 2013**

**Ends: Friday 8 February 2013**

**TERM 4**

**Starts: Monday 18 February 2013**

**Ends: Friday 22 March 2013**

**TERM 5**

**Starts: Monday 8 April 2013**

**Ends: Friday 24 May 2013**

**TERM 6**

**Starts: Monday 3 June 2013**

**Ends: Monday 22 July 2013**

**PLEASE NOTE THAT THE SCHOOL WILL ALSO BE CLOSED ON:**

**Monday 6 May 2013 - May Bank Holiday**

**INSERVICE DAYS**

**To be confirmed**